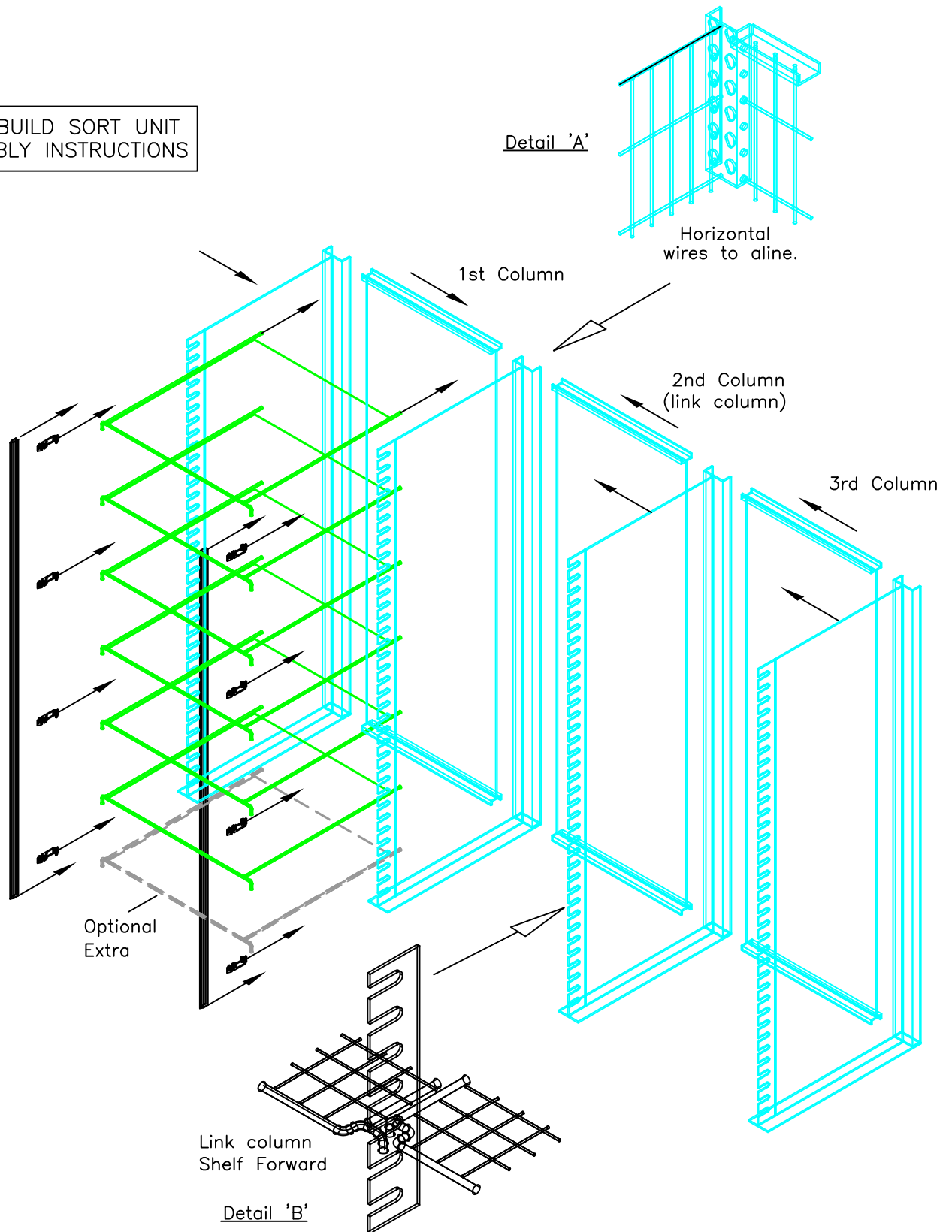


FLEXIBUILD SORT UNIT
ASSEMBLY INSTRUCTIONS



Construct units with Rear Panel flat on floor or worksurface with vertical wires uppermost.

Ensure horizontal wires of Rear Panels aline with horizontal wires of Side Frame, see detail 'A'.

Ensure Shelves are located level.

Assemble columns in alternate order, then link together so that shelf hooks of linking columns are in front of neighbouring shelves, see detail 'B'.

Fit Trim Clips & Trims on final assembly.

Ref: MRE 9071A3